

Helix Road, Brixton, SW2

2 bedroom flat - conversion for sale

£495,000

Leasehold

Property Details

A lovely two bedroom apartment with a private roof terrace, set within an attractive period property on a highly sought-after street. Spanning the width of the property is an inviting open-plan reception room offering ample space to cook, dine and unwind, with modern flooring and multiple windows which flood the room in natural light. Neatly tucked to one side the kitchen runs along one wall, maximising the space. Neutral décor and modern down lighting make this hub of the home the ideal place to entertain. A considerate layout ensures that both bedrooms are nestled away from the street with leafy views over the neighbouring gardens. Both bedrooms are well-proportioned and separated from one another to allow a level of privacy, making this appealing home perfect for sharers and those wishing to rent out a room. The principal bedroom boasts direct access to a private terrace, a wonderful spot for morning coffee or evening relaxation under the stars. The bathroom is neutrally decorated, equipped with a bathtub and shower above. Ready to move into with the potential to add your own touches over time. A share of the freehold will be granted upon the sale of the final flat in the building.

Features

- Two bedrooms
- Private roof terrace
- Victorian conversion
- Neutral blank canvas
- Popular quiet residential street
- Brixton a ten-fifteen minute stroll
- Heme Hill a fifteen-minute walk
- Brockwell Park close by
- Chain-free
- Share of freehold will be granted

Council tax band C

EPC rating C (73)

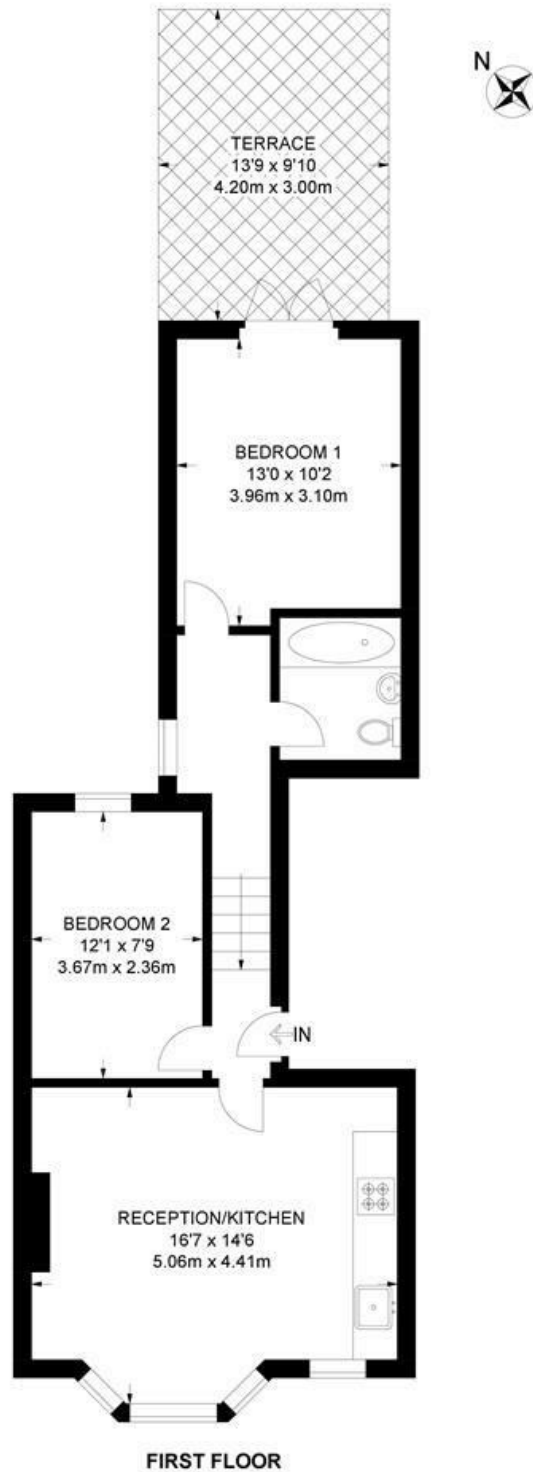


Helix Road, Brixton, SW2

Helix Road, SW2

2 Bedroom Flat

APPROXIMATE GROSS INTERNAL AREA: **565 SQ FT / 52.5 SQ M**



While we try our very best, floor plans are produced as a guide only and we take no responsibility for the precise accuracy with which any property is represented.

Helix Road, Brixton, SW2

